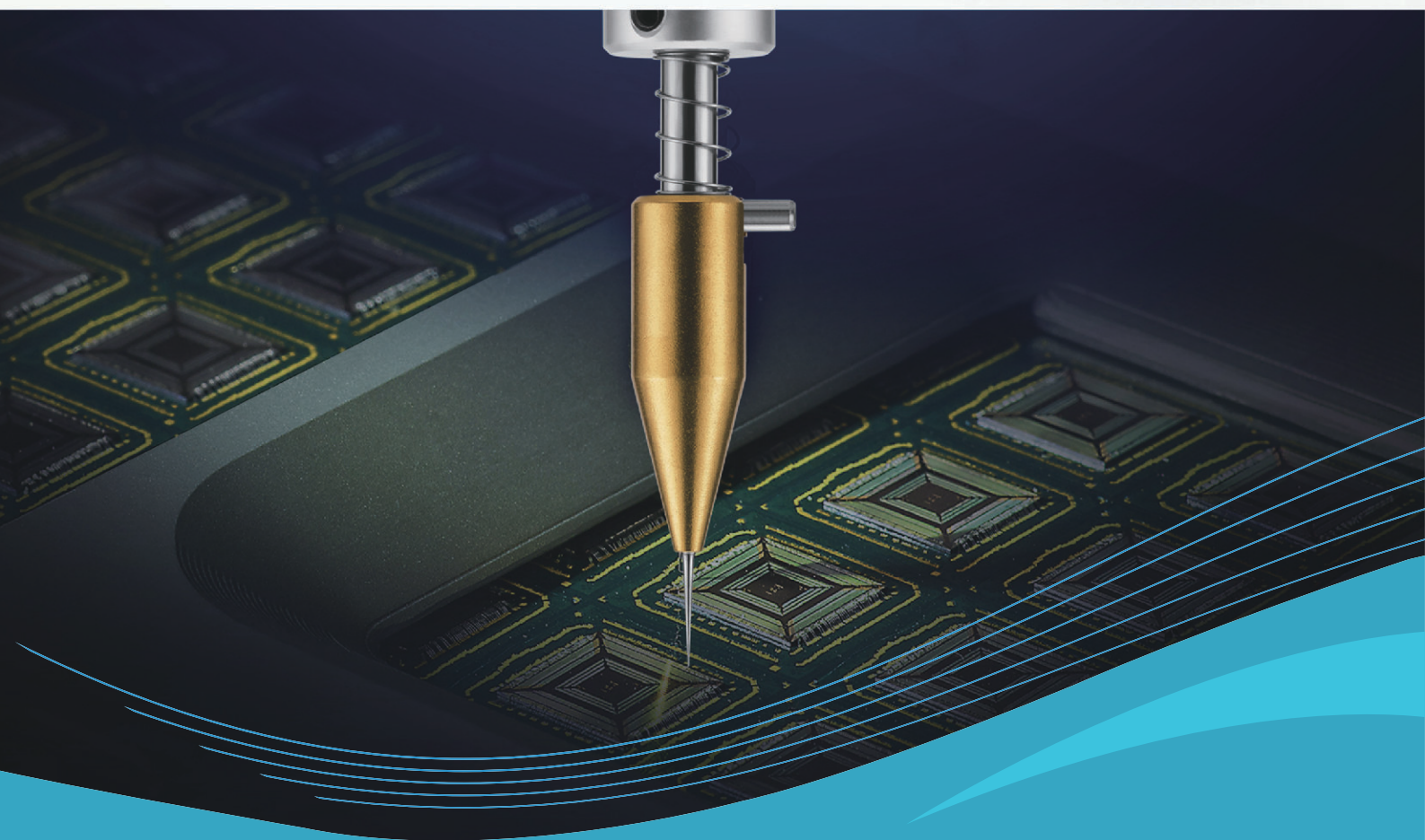


A close-up, high-angle view of a microscope's eyepieces and objective lenses, rendered in a light blue, semi-transparent style. The text 'WP100G Digital Module' is visible on the right side of the microscope body.

TRY
PRECISION

WP100G
Digital Module

STANDARD: JEITA EIAJ ET-7407 JEDEC JESD22-B117A JEDEC JESD22-B115 JEDEC JESD22-B116 ASTM F1269 DT/NDT MIL STD 883 MIL STD 883E



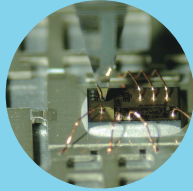
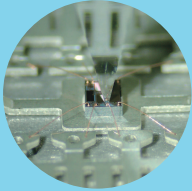
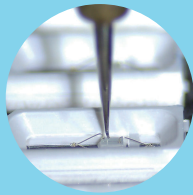
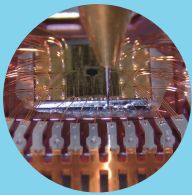
MFM Series

Multifunction Bond Tester

DGFT®

Trade mark of intelligent Digital Force Technology

Application



Bond Tester is widely used in semiconductor packaging, optical communication device packaging, LED packaging, COB/COG process testing, research in mechanics of material in Military Institutions, material reliability testing and other applications. It is also a crucial dynamic mechanics testing device for SMT process, semiconductor manufacturing process and bonding process. MFM Tester is able to meet the demand for applications including: Gold wire / copper wire / alloy wire / aluminum wire / aluminum tape pull tests, gold ball / copper ball / tin ball / wafer / chip / SMD Shear tests , tin ball/Bump pin pull tests and so on. It has the advantages of high expandability, convenience, efficiency and accuracy.

Testing modules with different functions that can satisfy clients with needs of high testing variety

All modules base on digital close-loop DGFT® TECH



BS250G testing Module



WP100G testing Module



DS100KG testing Module

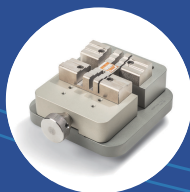
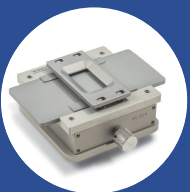


BS5KG testing Module



The machine provides an independent automatic precision calibration function, which can simultaneously detect sensor precision and linear precision. The data of calibration is automatically saved in the testing module, while the data of calibrated precision and linear precision are automatically saved in the computer for user's inspection. The calibration adopts specialized weights, which can be checked by third parties. Calibration equipment and weights can be used for GR&R verification.

Device Tools (Hook/Shear tool/Tweezers etc.) With high quality/durability/accuracy and series of products .Processed with specialized materials. These tools can be customized according to application requirements of users.



Precisely made work holder that are specialized for testing and manufacturing

According to customer application requirements, tailor-made institutions, exquisite, manufacturing precision testing workholder, effectively guarantee the valuable testing

Highlights

1 Vertical Positioning Technology Patented

Try-Precision ensures all Shear modules (Ball/Die... Shear) position precisely without any deviation. These modules are incorporated with fast shear height setting and accurate to micron scale. Testing motion is smooth, accurate and coherent. The module has the advantages of light touch force, zero horizontal shift positioning, fast positioning action and accurate shearing height .etc.

2 Vertical Point Movement Technology Patented

For the first time in the industry of bond tester, TRY-Precision successfully achieved the objective that no deviation & displacement of the main shaft during pull testing, which ensures that all pull modules (Wire/Tweezer/Cold Bump/Cold Ball/Push/Pull) eliminate the unwanted effect to the test results caused by the component force due to the deviation of the main shaft.

3 Base on DGFT® TECH DGFT® (Digital Force technology)

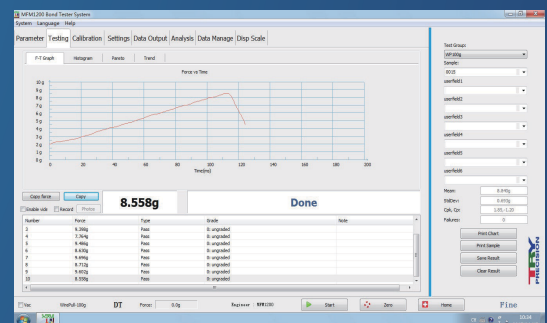
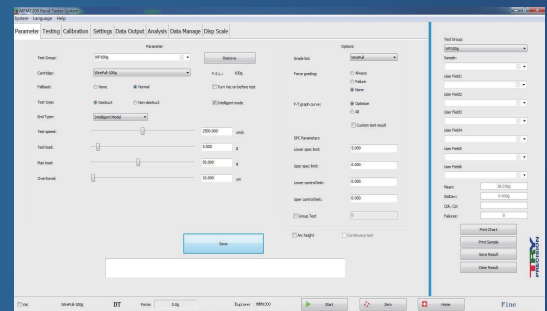
The DGFT® technology developed by TRY-Precision enables the function of exchanging modules between different bond testers without loss of precision for the first in the industry. Such technology provides clients reliable technical supports for quick function switching, function expanding and resources sharing.

4 24Bit High resolution

The industry leading 24Bit ultra high resolution. The resolution in full scale range exceeds the resolution in the smallest range of other companies. There is no need to worry about losing range for increasing resolution.

5 Auto Range technology

The leading "automatic" technology is supported by unique algorithms. There is no need to set up testing ranges, which simplifies the operation process for User.



- Special, Powerful software which is easy to control
- Build in SPC function
- Multiple data output format
- Data processing & failure statistics
- Perfectly matches factory net work



Test Module

Shear Test- Ball/Die/Zone

Transducer	Auto Range			
BS250G	250g	100g	50g	25g
BS1KG	1000g	500g	200g	100g
BS5KG	5kg	2.5kg	1kg	500g
BS20KG	20kg	10kg	4kg	2kg
DS100KG	100kg	50kg	20kg	10kg
DS200KG	200kg	100kg	40kg	20kg
ZoneDS-100KG	100kg	50kg	20kg	10kg

Pull Test-Wire

Transducer	Auto Range			
WP25G	25g	10g	5g	2.5g
WP50G	50g	25g	10g	5g
WP100G	100g	50g	25g	10g
WP1000G	1000g	500g	250g	100g
WP5KG	5kg	2.5kg	1.25kg	500g
WP10KG	10kg	5kg	2.5kg	1kg
WP20KG	20kg	10kg	5kg	2.5kg

Push Test- Down/Pull

Transducer	Auto Range			
DP100G	100g	50g	25g	10g
DP5KG	5kg	2.5kg	1.25kg	500g
PP5KG	5kg	2.5kg	1.25kg	500g
PP50KG	50kg	25kg	10kg	5kg

Pull Test-Tweezer / ColdBump

Transducer	Auto Range			
TP100G	100g	50g	25g	10g
TP5KG	5kg	2.5kg	1.25kg	500g
CBP100G	100g	50g	25g	10g
CBP5KG	5kg	2.5kg	1.25kg	500g

Accuracy MFM1200 Series $\pm 0.25\%$ FS

MFM1500 Series $\pm 0.1\%$ FS

Specifications

Machine	Machine footprint	Depth 600mm, Width 700mm (Including left and right joystick controllers) , Height 800mm
	Weight	65kg
	Power Supply	100/110V & 220 / 240V AC @ 4.0A 50/60Hz
	Pneumatic	Supply (for machine) 4.5Bar Minimum
	Vacuum	Supply (for workholder) 550mm Hg Minimum
	Pneumatic	6mm OD/4mm ID plastic pipe
	Control PC	Specialized PC with standard configuration
	Operating System	Windows 7 / Windows 10
	Microscope	Standard Motic (optional: LEICA / Nikon /OLYMPUS)
	Max Force for Machine Body	500kg
Axis	X,Y axis travel	100*100mm(standard)
	X,Y axis accuracy	$\pm 10 \mu\text{m}$ Full Travel
	X,Y axis repeatability	$\pm 5 \mu\text{m}$ Full Travel
	X,Y axis resolution	$<0.125\mu\text{m}$
	X,Y axis maximum speed	2 mm/s
	Y axis maximum force	100kg(standard) 200kg(optional)
	X axis maximum force	20kg
	Z axis travel	60mm
	Z axis accuracy over Full Travel	$\pm 10 \mu\text{m}$
	Z axis accuracy over 2mm	$\pm 1 \mu\text{m}$
	Z axis resolution	$\pm 0.125\mu\text{m}$
	Z axis maximum speed	7 mm/s
	Z axis maximum force	20kg
XY Tables	100*100mm(standard)	Maximum Force:100kg(standard) 200kg(option)
	200*200mm	Maximum Force:100kg(standard) 200kg(option)
	320*320mm	Maximum Force:50kg(standard)



RUIYIN(HK)Co.,Limited
www.try-precision.com

Tel: +86-755-26584556
Fax: +86-755-29500254