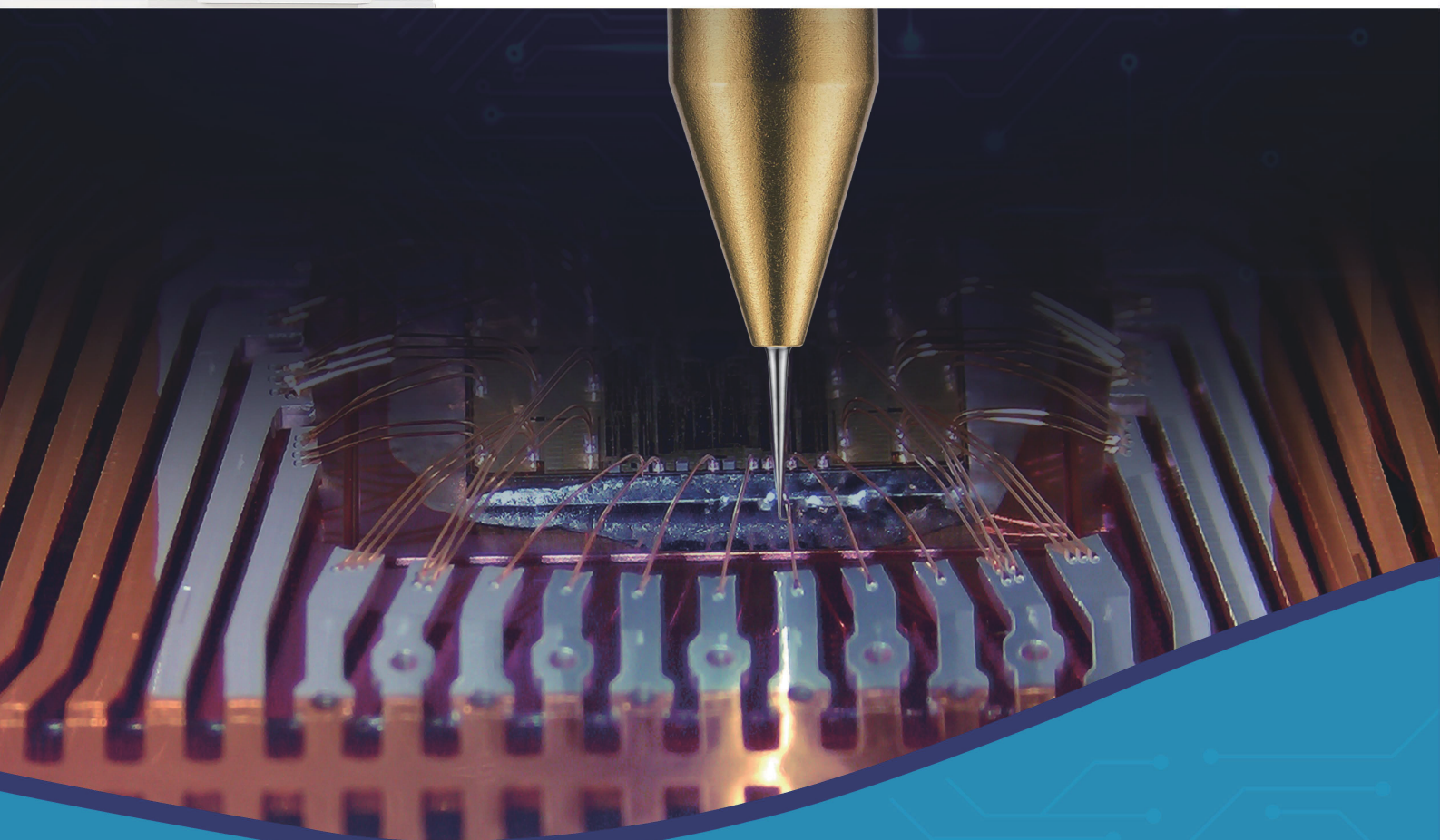


TRY
PRECISION

STANDARD: BGA Bump Shear JEDEC JESD22-B117A AU Ball Shear JEDEC JESD22-B116 Ball Shear ASTM F1269 Wire Pull DT/NDT MIL STD 883

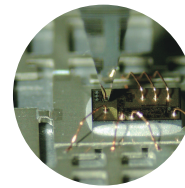
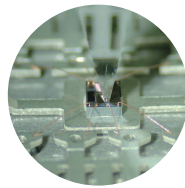
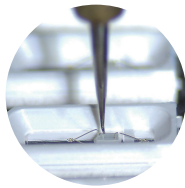
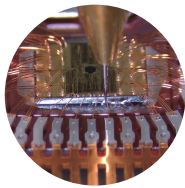


ABT Series

Automatic Multifunctional
Bond Tester

DGFT®

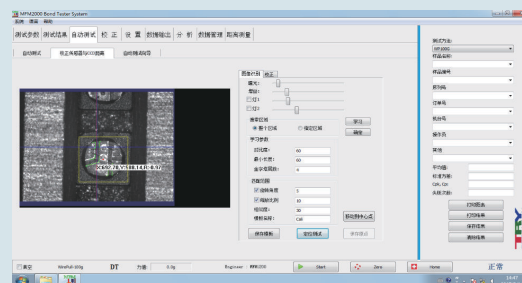
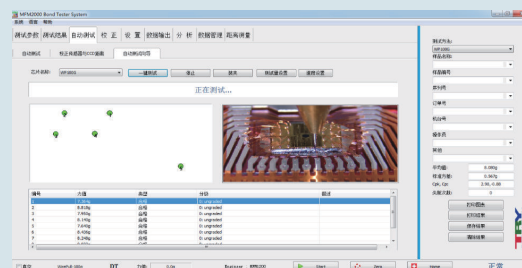
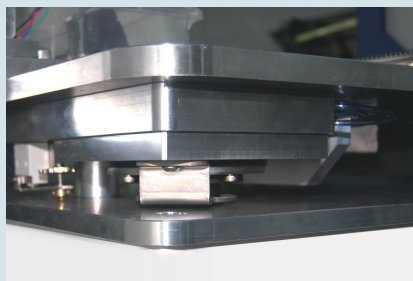
Trade mark of intelligent Digital Force Technology



Applications

- Semiconductor assembly, Destructive sampling test
- Semiconductor assembly, Non-destructive test
- LED assembly, Destructive test
- Military devices: Non-destructive test

leveling capacity to greatly enhance system environment adaptability and the capacity of resisting low-frequency vibration interference of ABT system, ensuring its highly precise inspection performance.



- Powerful and easy to operate control software.
- Perfectly match the SPC system.
- Quick and easy to operate Automatic programming.
- Rapid automatic image recognition and position.
- Software build in video recording and storing function.

Technical Highlights

1

Patented VPM Technology for Shear Test Module

TRY assure that all Shear Test Modules (Ball/Die... Shear) can position precisely without deviation on horizontal direction, supplementing with rapid and micro-level accurate setting of shear height to ensure a fast and precise test. Features of light contact force, positioning without no horizontal deviation, quick contact positioning action, precise shearing height and etc..

2

Patented VPM Technology for Pull Test Module

TRY are the first one in this industry to realize that the main axis has no deviation and displacement during pull test. We assure that all tensile modules (Wire/Tweezer/Cold Bump...Pull) completely eliminated the negative influence of component force on the test results when the main axis of the test is skewed.

3

DGFT® Intelligent digital closed loop technology

Base on DGFT® technology, TRY is the first one to realize the function of exchanging test modules between different main machine without loss of precision. We can provide our users with reliable technical support for users' quick function switching, expanding equipment function and resource sharing.

4

24Bit Ultrahigh resolution factor/Auto Range technology

With Industrial leading 24Bit Ultrahigh resolution, exceed the other industry peers' minimum range of resolution level within the gamut, and combined with a unique algorithm. Therefore, users do not need to set the test range and worry about that improve the measurement precision will lose of measurement range.

5

Rapid automatic image recognition / position technology

Automatically match images and precisely position the sample according to its characteristics, there is not necessary for manual positioning during the testing process, which greatly improves the overall measurement precision of the system and reduces the labor cost.

6

Perfectly match automatic feeding and unloading system (optional)

TRY Automatic Feeding and Unloading System can feed quickly and precisely, and contains instruction of autorun status. What Users do is to wait its finish after putting the feed box in place and pressing one button.



Test Module

VPM&DGFT&24Bit

Shear Test– Ball/Die

Transducer	Auto Range			
S250G	250g	100g	50g	25g
S500G	500g	250g	120g	50g
S5KG	5000g	250g	1000g	500g

Pull Test– Wire

Transducer	Auto Range			
WP25G	25g	10g	5g	2.5g
WP50G	50g	25g	10g	5g
WP100G	100g	50g	25g	10g
WP1000G	1000g	500g	250g	100g

Specifications

Equipment	Size	Depth1180mm, Width 1110mm (include LCD) , High 1750mm		
	Weight	150kg		
	Power supply	100/110V or 220/240V AC @ 4.0A 50/60Hz		
	Air supply	4.5–6Bar, clean dry air		
	Vacuum supply	550mm Hg		
	Air Supply Connection	6mm OD/4mm ID plastic pipe		
	Control PC	Special PC		
	System	Windows 7 / Windows 10		
	Microscoper	Standard Motic		
Axis	X,Y axis travel	250*250mm(standard)		
	X,Y axis accuracy	± 5 um Full Travel		
	X,Y axis repeatability	± 5 um Full Travel		
	X,Y axis resolution	<0.35um		
	X,Y axis maximum speed	10 mm/s		
	Y axis maximum force	50kg(standard)		
	X axis maximum force	50kg		
	Z axis travel	80mm		
	Z axis accuracy over Full Travel	± 5um		
	Z axis accuracy over 2mm	± 1 um		
	Z axis resolution	± 0.125um		
	Z axis maximum speed	7 mm/s		
	Z axis maximum force	20kg		
XY Tables	250*250mm(standard)	Maximum Force:50Kg(standard)		
	300*300mm	Maximum Force:50Kg(standard)		
	320*320mm	Maximum Force:50Kg(standard)		
System Accuracy		± 0.1% FSL	Sensor Accuracy	± 0.05% FSL



RUIYIN(HK)Co.,Limited
www.try-precision.com

Tel : +86-755-26584556
Fax : +86-755-29500254