

Test Module VPM&DGFT&24Bit

Shear Test- Ball/Die					Pull Test-Wire				
Transducer	Auto Range				Transducer	Auto Range			
S250G	250g	100g	50g	25g	WP25G	25g	10g	5g	2.5g
S500G	500g	250g	100g	50g	WP50G	50g	25g	10g	5g
S1KG	1000g	500g	250g	100g	WP100G	100g	50g	25g	10g
S5KG	5000g	2500g	1000g	500g	WP1000G	1000g	500g	250g	100g

Specifications

Equipment	Footprint	Depth 1300mm, Width 1280mm, Height 1650mm (excluding alarm tower)	
	Weight	1200kg	
	Power Supply	110V / 220V AC @ 16A 50/60Hz	
	Pneumatic Supply	CDA, 0.4MPa – 0.6MPa	
	Vacuum Supply	< – 60KPa	
	OS	Win10 64Bit	
	System Accuracy	±0.1%FS	
Axis	X/Y axis travel	200 mm X 150 mm	
	X/Y axis accuracy	± 5 um	
	X/Y axis maximum speed	50 mm/s	
	X/Y axis maximum force	20kgf	
	Z axis travel	70mm	
	Z axis accuracy	± 1um	
	Z axis maximum speed	5mm/s	
XY Tables	XYS2015	200 mm X 150 mm	maximum force: 20kgf
	XYS3220	320 mm X 200mm	maximum force: 20kgf
	XYS3215	320 mm X 150mm	maximum force: 100kgf
Specification of the Loader& Unloader	Width	35mm – 100 mm	
	Length	120mm – 300mm	
	Model	Single-step / Fully automatic	
	Configuration of loading and unloading	Standard A in B out	Optional A in A out
Test Mode	Semi-automatic	As the industry leader in the field of bond testing , TRY-PRECISION supplies automatic, semi-automatic multi-function bond tester and material tester with advanced technology and superior performance in long-term for semiconductor integrated circuit and microelectronics assembly industry. Owing lots of advanced core technologies, perfect market and service system. TRY-PRECISION also can provide deep technical support and efficient after-sales service so as to offer both high-quality products and services for global semi-conductor enterprises.	
	Fully automatic		
Software	ABT2000C		
	SECS/GEM(Optional)		
Compliance	EMC		
	RoHS		
	CE		
	SEMI		



Specifications subject to change without prior notice.  
Copyright © TRY-PRECISION

RUIYIN(HK)Co.,Limited  
www.try-precision.com  
TEL:+86-755-26584556  
FAX:+86-755-29500254



STANDARD: BGA Bump Shear JEDEC JESD22-B117A AU Ball Shear JEDEC JESD22-B116 Ball Shear ASTM F1269 Wire Pull DT/NDT MIL STD 883



# ABT2000C

## Bond Tester





# Advanced Automatic Testing Technology

Fully Automatic & Unmanned Operation & Multi-function Bond Tester

Magazine To Magazine Fully Automatic Loader & Unloader

I\_see Intelligent Image Recognition

Advanced Dynamic Force Measuring System

High Accuracy Positioning Control Technology

Advanced Automatic Loader & Unloader



Automatic Magazine Loader



Automatic Lead-frame Loader & Unloader



Automatic Lead-frame Carrier and Clamper



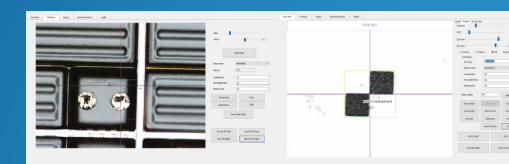
- Users Put the Magazine into the Loader & Unloader, Select the Recipe, the System Automatically Running, Include the Whole Process Steps: Lead-Frame Loading / PR / Dynamic Force Measuring / Data Analysis / Data Uploading / Lead-Frame Unloading etc.
- Multiple Magazine Load, Batch Testing, None Manual Operation for the Same Type Magazine(Lead-frame)
- Adjustable Magazine Clamper
- Adjustable Loading & Unloading Rail
- Adjustable Lead-frame carrier and clamper
- Automatic & High Accuracy Positioning Lead-frame Clamper
- Automatic Magazine Loading Monitor, Loader Alarm When None Magazine or Empty Magazine is Full.
- Automatic Lead-frame Loading & Unloading Monitor

## I\_SEE Intelligent Image Recognition

- With the intelligent image recognition system in 3 levels, it is equipped with powerful camera and optical system to achieve intelligent recognition and positioning, which is with high accuracy and repeated positioning accuracy.
- Trinocular microscope and HD camera, facilitate observation operation and test video recording, and assist customer test and analysis.
- Friendly man-machine operation interface, powerful software function with high performance.



High-precision cameras, optical lens



Intelligent visual recognition software

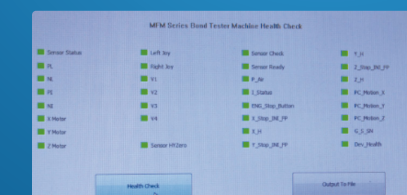
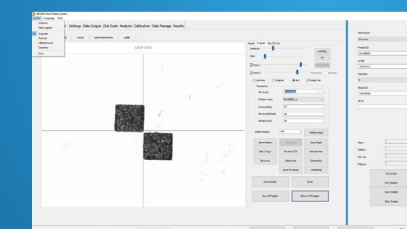
## Advanced Automatic Bond Testing System

- With the high dynamic sensor and VPM patented technology, it can achieve the accurate positioning of the test principal axis without any excursion.
- With the vector shear test module, the test angle can be automatically rotated according to the characteristics of the samples, and the vector shear can be realized through multi-axis linkage of the system;
- $\pm 0.1\%$ FS system accuracy and 24Bit ultrahigh resolution to ensure excellent measurement repeatability

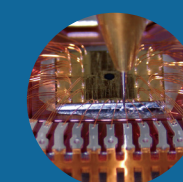


## Friendly Human-machine Interaction

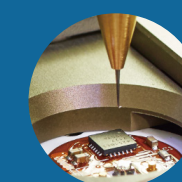
- Powerful, convenient operation, supporting multiple mode
- Manual and automatic test mode switchable, match mass production test requirements
- With four-level management authority, match control requirements of users;
- With complete data processing, analysis, statistics and other functions, supporting SECS / GEM, MES and other third-party interfaces and transmission;
- Support software one-step control ; visual device status display



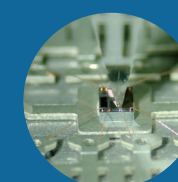
## Applications



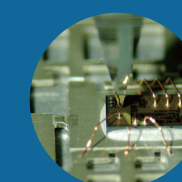
Semiconductor



Automotive Electronics



SMT



Power Semiconductor